


**Project/
Open**

**System
Architecture**

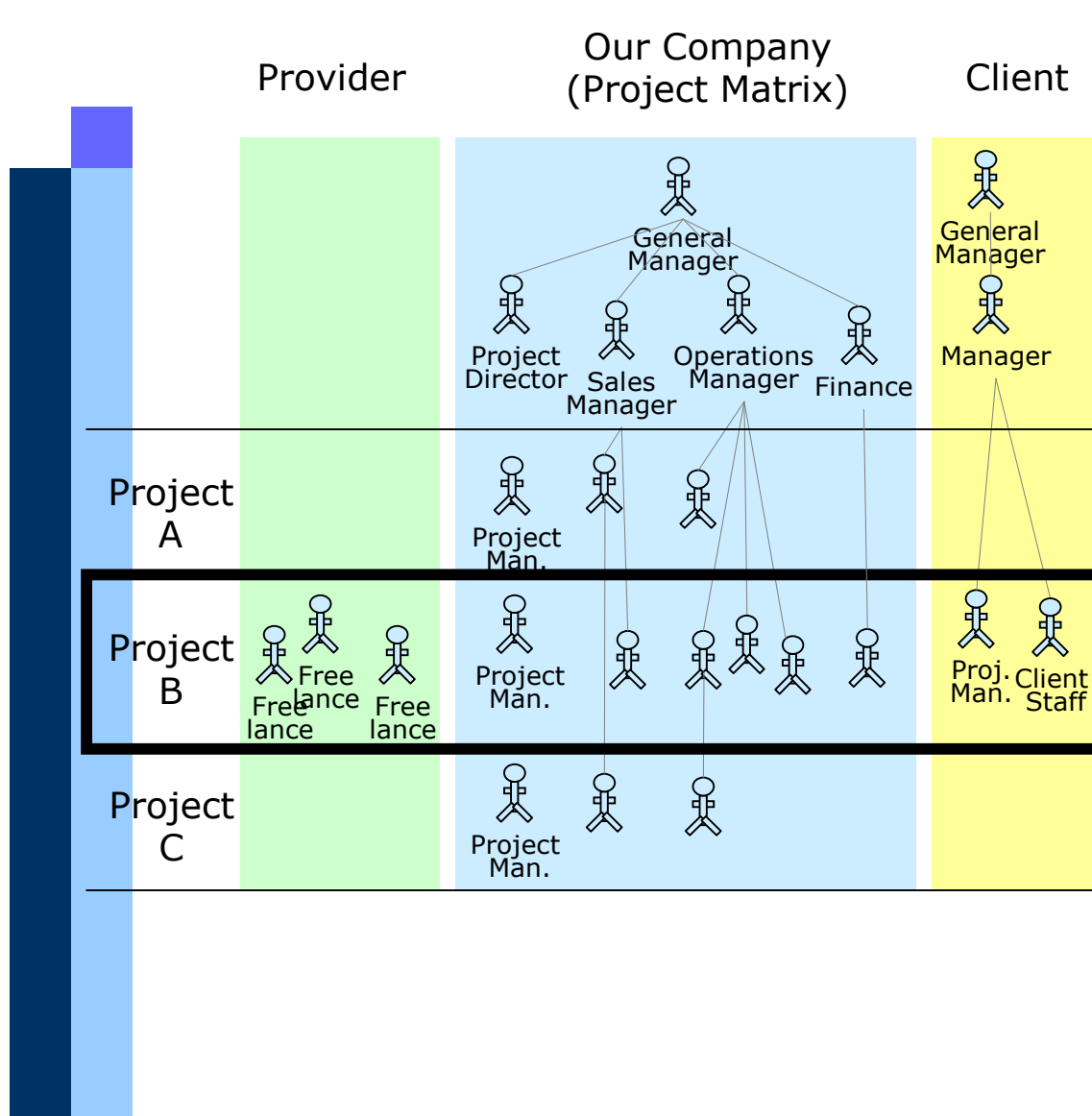
Permission Model



Project/Open allows for managers, staff, freelancers and clients to collaborate on the same projects, communicate and share knowledge, all using a single Internet-Server, without organizational boundaries.

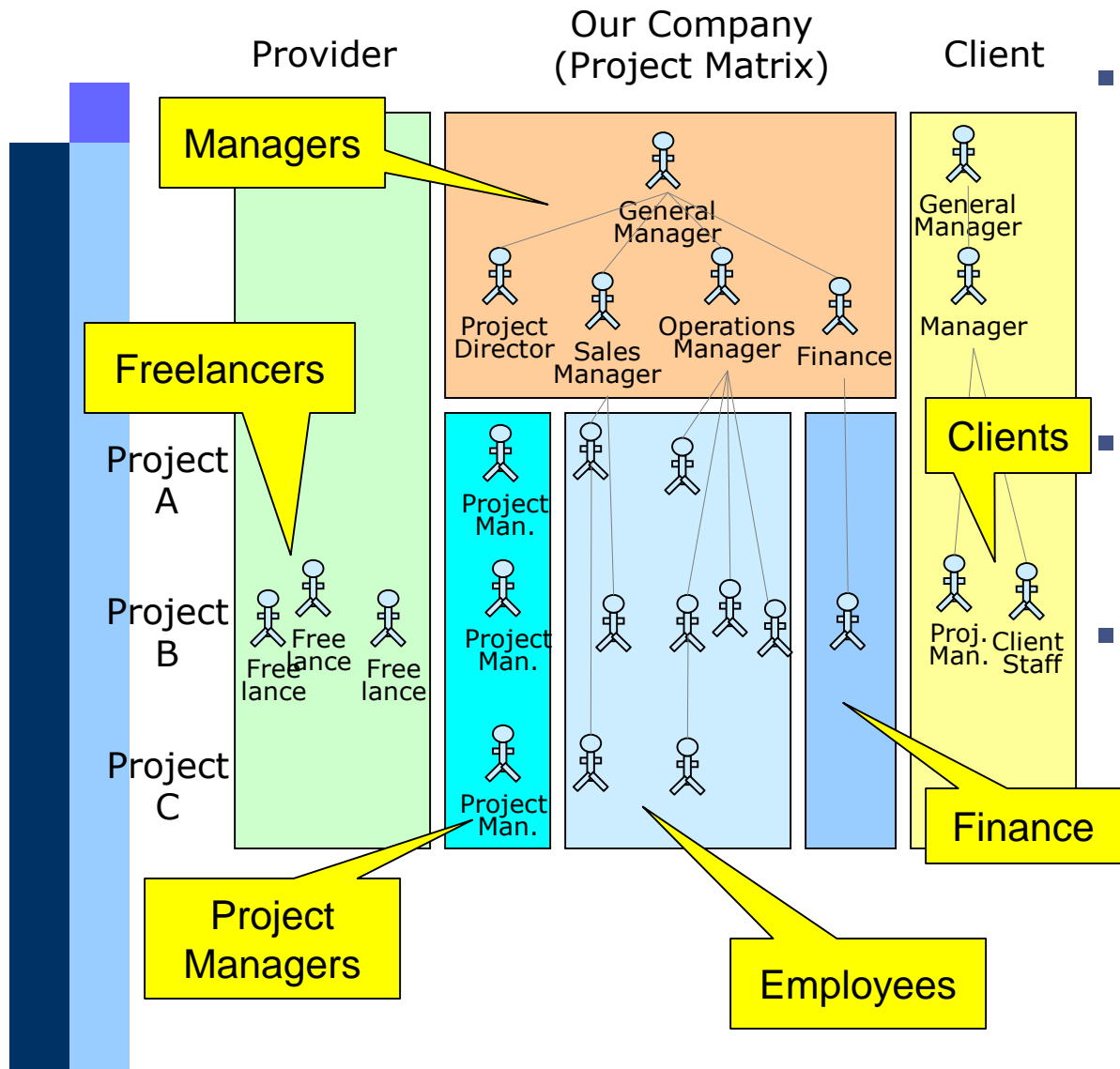
However, critical information such as customer lists, company finances, corporate secrets, employee data etc. need to be protected to unauthorized access.

The Organizational Model



- Our Company is organized as a project matrix
- Freelancers and clients may participate actively in the projects

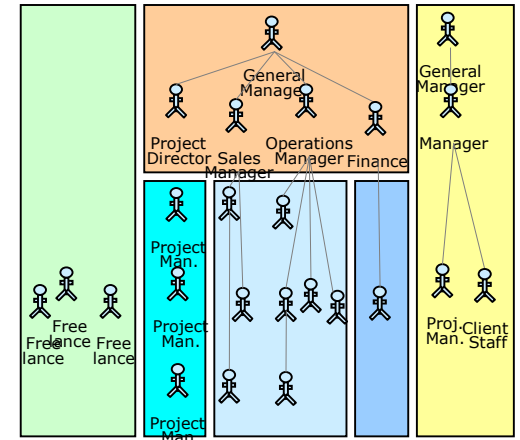
Profile Based Permissions „Vertical“ Permissions



- Predefined Profiles:
 - Manager
 - Project Manager
 - Employee
 - Finance
 - Client
 - Freelance
- Access permissions to all critical data can be assigned to profiles
- Additional profiles can be defined if necessary

Profile Based Permissions Profiles Overview

- Profile based permissions are restricting access to entire areas of Project/Open.
- Many fields of business objects such as Project or Customers are invisible for certain profiles.



- Administrator
- Manager
- Project Manager
- Employee
- Financial
- Freelance
- Client

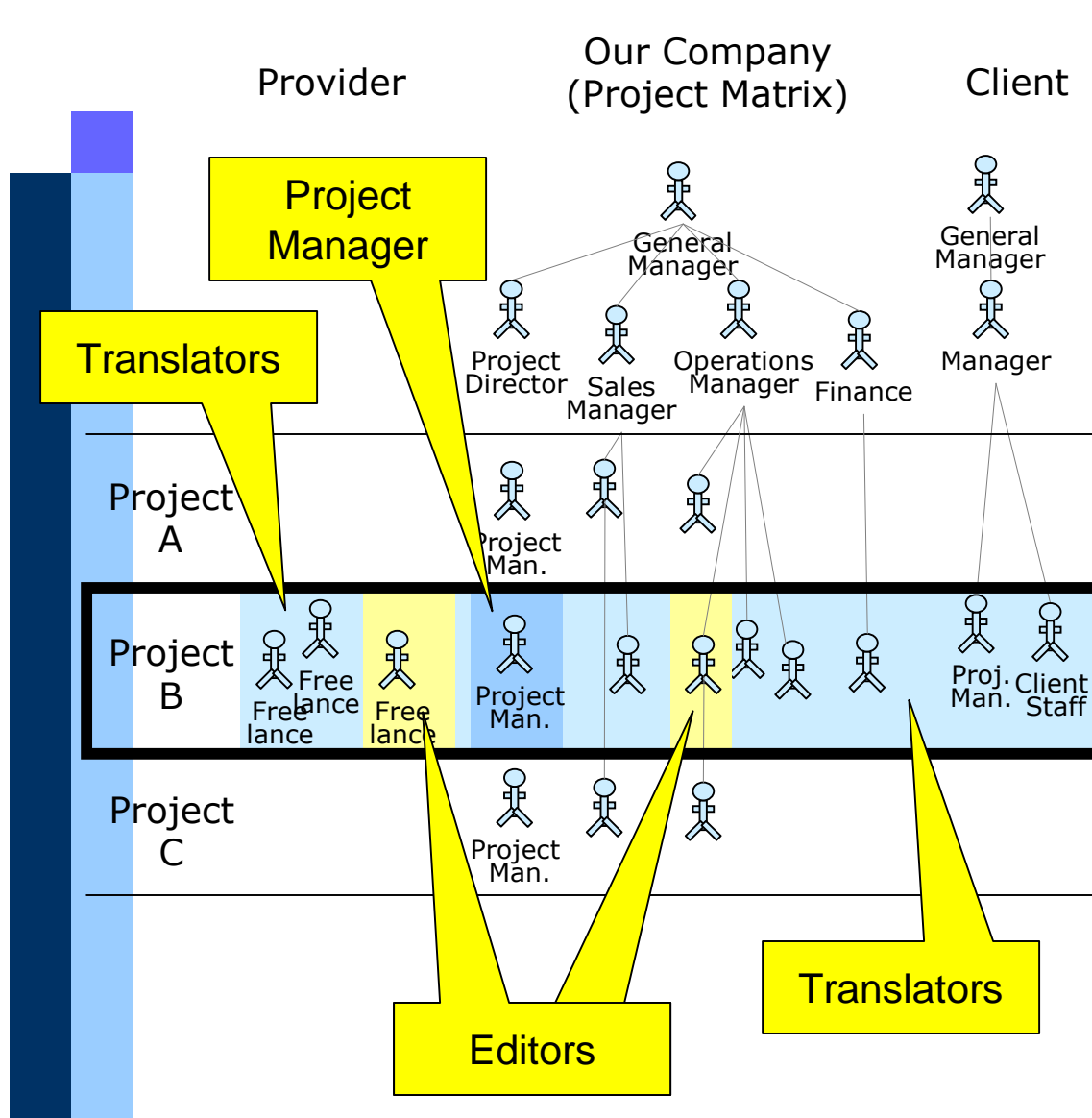


Profile Based Permissions Profiles Details

	Administrator	Managers	Project Man.	Finance	Employee	Client	Freelance	Description
Customers								
view_customers	x	x	x	x				Necessary condition to view any information about customers at all
view_customer_contacts	x	x	x ¹					Allows to see the employees of a customer ("customer contacts")
view_customer_details	x	x	x ¹	x				Allows to see the address and other details of a customer
view_customer_support	x	x	x	x	x			Allows to see support-related communication
add_customers	x	x						Allows to add new customers to the system
edit_customers	o	o	o	o	o	o	o	Does not exist. Access rights are defined on a by-customer base.
Projects								
view_projects	x	x	x	x	x	x	x	Necessary condition to view any information about projects at all
view_projects_of_others	x	x	x					Allows to see projects in which the user doesn't participate
add_projects	x	x	x					Allows to add new projects to the system
edit_projects	o	o	o	o	o	o	o	Does not exist. Access rights are defined on a by-project base.
Users								
view_users	x	x	x	x	x			Necessary condition to view any information about users at all
view_employees	x	x	x	x	x			Allows to see the list of employees
view_freelancers	x	x	x	x	x			Allows to see the list of freelancers and other externals
view_customer_contacts	x	x	x ¹					Defined above.
add_freelancers	x	x	x		x			Allows to add new users to the system
add_users	x	x	x ³		x ³			Allows to add new users to the system
Hours & Allocations								
view_hours	x	x						Necessary condition to view any information about work hours at all
view_hours_of_others	x	x						Allows to see the hours of other users
view_allocations	x	x						Allows to see the allocations of other users
Other								
view_finance		x						Allows to enter into the price and accounting modules
view_admin	x							Allows to enter into the system administration sections
search_intranet	x	x						Allows to do search for Intranet contents.
								¹) Only for assigned customers
								²) Only for assigned projects
								³) Depending on their profiles

- The association of access rights to user profiles is flexible and can be changed.
- New user profiles can be created if convenient
- Access rights to projects and customers can be modified on a by-case base.

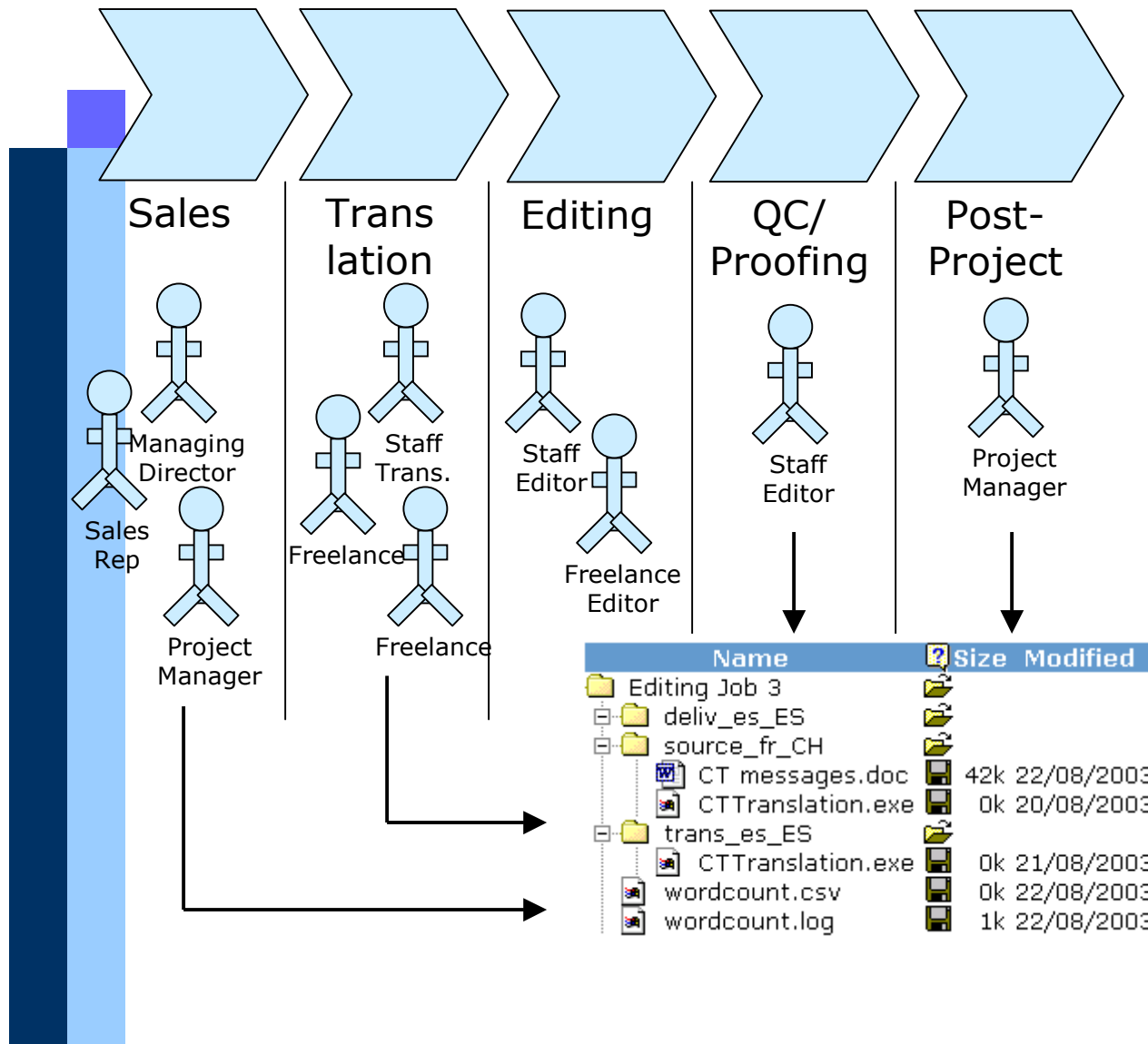
Project Based Permissions



- Within a specific project, freelancers and clients may have the same rights as in-house staff. Freelancers may even have to act as project managers.
- Predefined **roles**:
 - Sales/Presales
 - Project Manager
 - Analyst, Developer, Tester, ... (IT-Consulting)
 - Editor, Translator, Proof Reader, ... (Translation)
 - Texter, Designer, ... (Advertizing)

Project/ Open

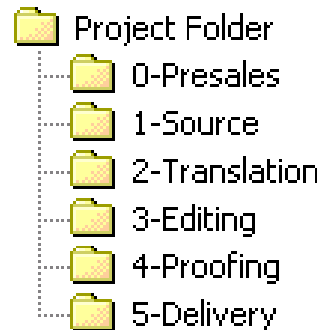
Project Based Permissions



- Project phases are associated with sub-folders of the project file storage

Project Based Permissions

- Folder Permissions can be set as a function of the role of a team member in a project.



	Profile				
	P-PM	C-PM	Trans.	Editor	QC
R/W	-	-	-	-	-
R/W	R/W	R	R	R	R
R/W	-	R/W	R	R	R
R/W	-	R	R/W	R	R
R/W	-	R	R	R	R/W
R/W	R	R	R	R	R

- Additional Folders and profiles allow to adapt to custom specific project phases